

FAQs – Path Project

Approved by the Board of Trustees Under the Capital Campaign

What is the Path Project? It is a project under the RRUUC Capital Campaign 2015-20 to construct a hard surface pathway and raised pathway deck from Whittier Boulevard to the building plaza to replace the current mulch path.

What is the origin of the Path Project? The Path Project had its origin in the October 2014 Board of Trustees' motion initiating the Capital Campaign in which the Board identified "path safety" as one of the Campaign's "essential priorities." In the Capital Campaign Brochure, there were references to (i) "safety concerns on the path," (ii) the need for "improved walking paths," (iii) "improve walking paths by installing lights," and (iv) "improvement of ... Walkways."

What have been the safety concerns regarding the current mulch path? Many seniors, people with mobility limitations, and others have reported difficulty using the mulch path, especially when wet or snow covered, and have felt forced to walk up the driveway instead. River Road staff report that there have been accidents and injuries to those using the mulch path or diverting to driveway. RRUUC has a duty to provide a safe all-weather means for congregants and visitors to walk to the building. In case of emergency evacuation of the building, people are required to use the path in order to keep the driveway free for emergency vehicles.

How was the pathway design created? Since 2017, the Building Committee has been working with a landscape architect assessing a range of pathway design concepts to find one that is safe, all-weather, consistent with River Road's environmental principles, and would be affordable within the Capital Campaign funds. The concept for the selected design was shared at congregational forums in 2018 and was well received.

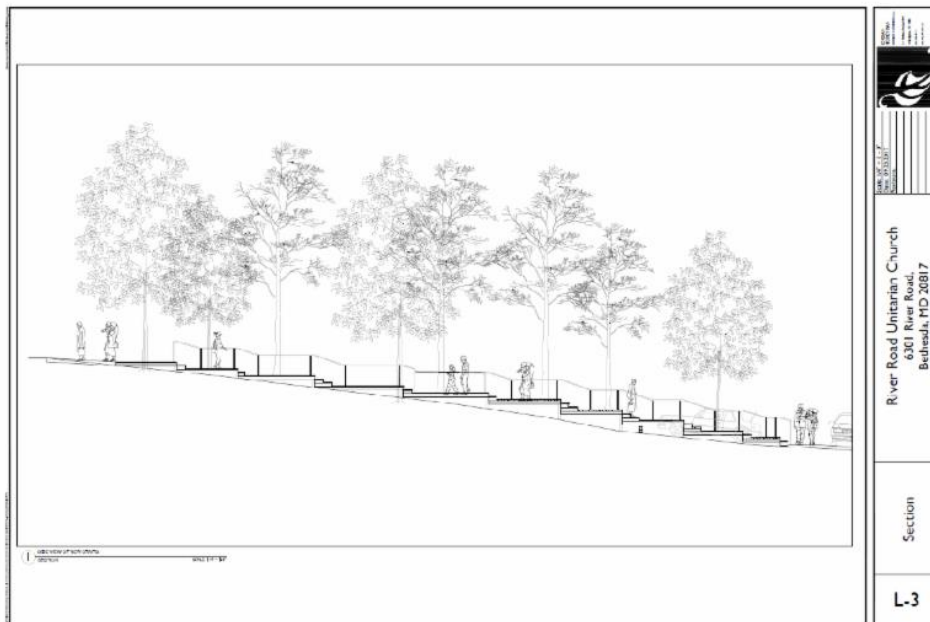
What is going to be the cost to construct the Path Project? The design options evaluated and bids received ranged in cost from about \$165,000 (estimated cost for an environmentally damaging all-concrete slab path, e.g., tree root damage and storm water runoff) to nearly \$600,000 (construction cost of the approved design from second lowest bidder). The approved design and lowest bid at \$291,000 provides for a durable raised decking with non-skid surface, handrails, and stairs on rising grade, effective lighting, clear signage, minimal impact on trees, and easy leaf and snow/ice removal. At this cost level, the project is fully funded by remaining Capital Campaign pledges.

What was the Board's process for evaluating the Proposed Path Project? The Board carried out a detailed discernment process including extensive information gathering regarding the origins of the Path Project and its design evolution over time, as well as receiving the views of the Building Committee, the Finance Committee, and Rev. Ladd and the River Road staff. After thorough review and discussion of the facts and views during two Board meetings, the Board approved the project as recommended by the Building Committee and authorized Rev. Ladd to sign the construction contract for implementation during the summer and early fall of 2019.

In summary, what will be the overall benefit of the Proposed Path Project? It fulfills Rev. Nancy Ladd's call for action in her Senior Minister Message in the Capital Campaign Brochure: "Safety concerns on the path leading up to the wide-welcome of our front doors call us to responsible action...."

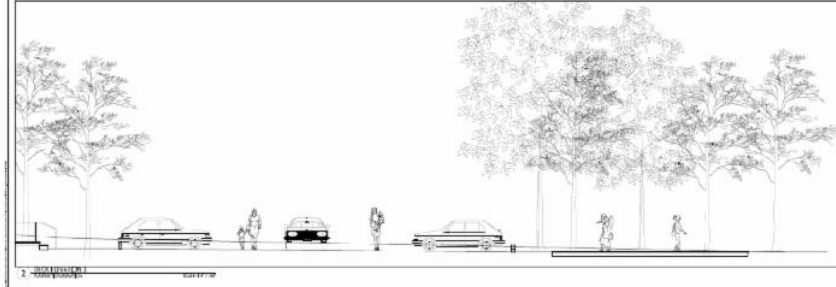
[Large versions of the images below are available on the "Path" Board on the Bridge.](#)

Note that the new path also has a lighting plan that is not reflected in the drawings.





1. ELEVATION



2. ELEVATION



Architectural Firm
Name
Address
City, State, Zip

River Road Unitarian Church
6301 River Road,
Barnes, MD 20817

Section

L-3